

Firmware 8.2a

Addendum to
User Guide

AS 43, AS 45, AS 200 IT



AGFEO
einfach | perfekt | kommunizieren

Changes from Firmware 8.2a

Tabel of Contents

Tabel of Contents	2
Overview	3
LAN-Module 508	4
LAN-Moduls 510 Enhancements	4
ST 40 IP	5

Changes from Firmware 8.2a

Overview

The firmware 8.2a is intended for the following telephone systems AS 43, AS 45 and AS 200 IT and will support the following enhancements:

- Support of the LAN-Module 508
- SIP Server integration within LAN-Module 510
- Support of System Phone ST 40 IP

Please use a current TK-Suite version which you will find on our homepage at: www.agfeo.com.

NOTE:

Due to comprehensive changes within the new firmware the following features must be newly programmed after a firmware upgrade from version 7.6 to version 8.0 or higher: EIB, Status Display of System Phones, Answering Machine and Call Barring.

The system must be completely reprogrammed for any firmware changes which are greater than (<7.6 - > 8.0)!

We suggest to follow the upgrade procedure as listed below:

1. Backup system program by using a current TK-Suite version.
2. Please ensure that the system is running on a current SM version. Information regarding this and how to obtain a download of this can be found on our homepage. If applicable upgrade the update module (SM) first. The system will remain inoperative after an SM update. Please carry out a firmware upgrade soon afterwards.
3. Load the previous saved backup into the system.
4. Receive (download) system programming.
5. Reprogram the above mentioned features and check all others.
6. If so required program newly added features / functions.
7. Send changes back into system and create a new back up copy.

Changes from Firmware 8.2a

LAN-Module 508

The LAN Module 508 will integrate the AGFEO Telephone Systems AS 43, AS 45 and AS 200 IT into networks and will offer the proven service and feature characteristics for the utilisation and operation via a network interface.

The LAN Module 508 offers an ASIP server with the utilisation of 8 internal channels. This will enable you to utilise the existing network structure and register up to 8 ST 40 IP's to your LAN-Module 508. The ST 40 IP will offer the same features to be used with AGFEO Telephone Systems as the ST 40 S0 or the ST 40 UP0. For further information please refer to the user guide of the ST 40 IP (Ident No. 1102021)

In addition the LAN-Module 508 offers you the programming of the telephone system by using the integrated TK-Suite Set.

Up to 2 LAN Modules 508 may be used in the AS 43, AS 45 or AS 200 IT.

Additional information is available via the Internet at:
<http://www.agfeo.com>

In order to register an ST 40 IP, please follow the instructions on page 5 of this manual.

LAN-Moduls 510 Enhancements

Firmware 8.2a will integrate a SIP Server in the LAN-Module 510 and the ASIP component will be added to the already existing VoP Server.

Up to 8 channels can be utilised as internal SIP channels or up to 8 ST 40 IP can be connected to the telephone system using the already existing network structure.

Follow the instruction below to register a SIP telephone to your LAN Module 510:

- Start TK-Suite Set (refer to page 9 of the LAN-Module 510 user guide)
- Click onto „Extensions/Devices:SIP“
- Enter a user name and password for your SIP phone and select an extension number.
- Click onto „Apply“ to enable this setting
- Enter the IP address of the LAN module as SIP server in your SIP phone.
- Enter user name and password
- For SIP telephony enter the ports 5060 to 5061.

To register an ST 40 IP phone follow the instruction on page 5 of this manual.

Changes from Firmware 8.2a

ST 40 IP

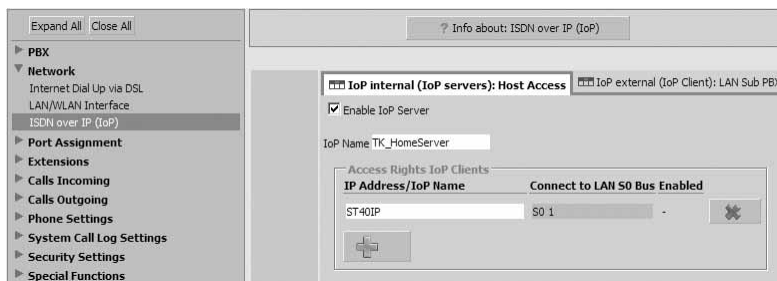
The ST 40 IP will allow the full system functionality of an ST 40 to be utilised via an existing network structure. Connected via the proven AGFEO IoP technology the ST 40 IP may be operated on the AGFEO AS 43, AS 45, or AS 200 IT which will include LAN-Module 510 or LAN-Module 508. The operating voltage for the telephone can be either supplied via an ethernet connection (power over ethernet) or via an optional plug in power supply.

Follow the instruction below to connect your ST 40 IP to an AGFEO Telephone System which supports ASIP:

- Press and hold the „SET“ button for at least 4 seconds.
- Allocate a unique IoP name to your ST 40 IP:
 - Select „Name“ and press „edit“.
 - Enter the required name for the ST 40 IP. By using „clear“ you can delete single letters or the complete name. „Store“ will save the name entered.

Enter the way in which the telephone should receive the IP address:

- Select „DHCP“ and press „edit“.
- Select if your telephone should receive the IP address automatically („Client“), or if you want to allocate a permanent IP address („Static“).
- If you selected „Static“, then enter the IP address, the Subnetmask („Mask“) and the Standard Gateway („GWay“).
- Under „Server“ enter the IP address of your LAN module 508 / 510 .
- To enable/disable compression, select „Comp“ and press „edit“.
- Press „Restart“. The telephone will be restarted and will register to the LAN module.
- Start the programming of the LAN module and activate the telephone:



- Allocate an extension number to your ST 40 IP

